

# Paso Robles Municipal Airport

Location: 4 nmi Northeast of Paso Robles, CA

Var: 15° East

Status: Attended/Public Use

## AIRPORT OVERVIEW

Publicly-owned airport. Lighted wind indicator w/ segmented circle. Airport lighting schedule is from dusk to dawn w/ pilot controlled (radio-controlled) lighting on CTAF (123.0).



## AIRPORT SERVICES

CHEVRON fuel (100LL-SS, Jet A-SS). Minor Airframe Repairs, Minor Power Plant Repairs, Low Bottle Oxygen.

## AIRPORT COMMUNICATIONS

ASOS:	120.125
CENTER (® Oakland App/Dep):	128.7
CTAF/UNICOM:	123.0
HAWTHORNE FSS (RCO):	122.4

## AIRPORT OPERATIONS

Airport attended 0700 to 1800 local time. Instruction, Parachute Jumping, Aircraft Rentals & Remote Control Aircraft.

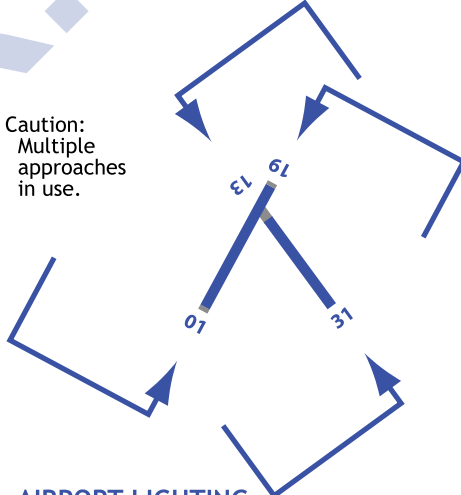
## AIRPORT ELEVATION

Paso Robles Municipal Airport  
840 feet MSL

## AIRPORT PARKING

Tie-downs available.

Caution:  
Multiple  
approaches  
in use.



## AIRPORT FEES

Parking, Overnight Tie-down, Hangar and after hours call-out fees (805) 239-5860/FBO.

## AIRPORT PATTERN ALTITUDE

1,840' MSL (1,000' AGL)

## AIRPORT LIGHTING

PCL available CTAF (after 2200 lcl) - 123.0  
Rwy 01/19 (HIRL) & Rwy 13/31 (MIRL)  
runway lights  
Rwy 19 & Rwy 31 PAPIs  
Rwy H1 perimeter lights

## AIRPORT REMARKS

1. Fee for call out service 6pm to 7am local time (805) 239-5860 (FBO).
2. Helipad H1 perimeter lights.

# Paso Robles Municipal Airport

## AIRPORT OVERVIEW MAP

## AIRPORT COMMUNICATIONS

ASOS:	120.125
CENTER (® Oakland App/Dep):	128.7
CTAF/UNICOM:	123.0
HAWTHORNE FSS (RCO):	122.4

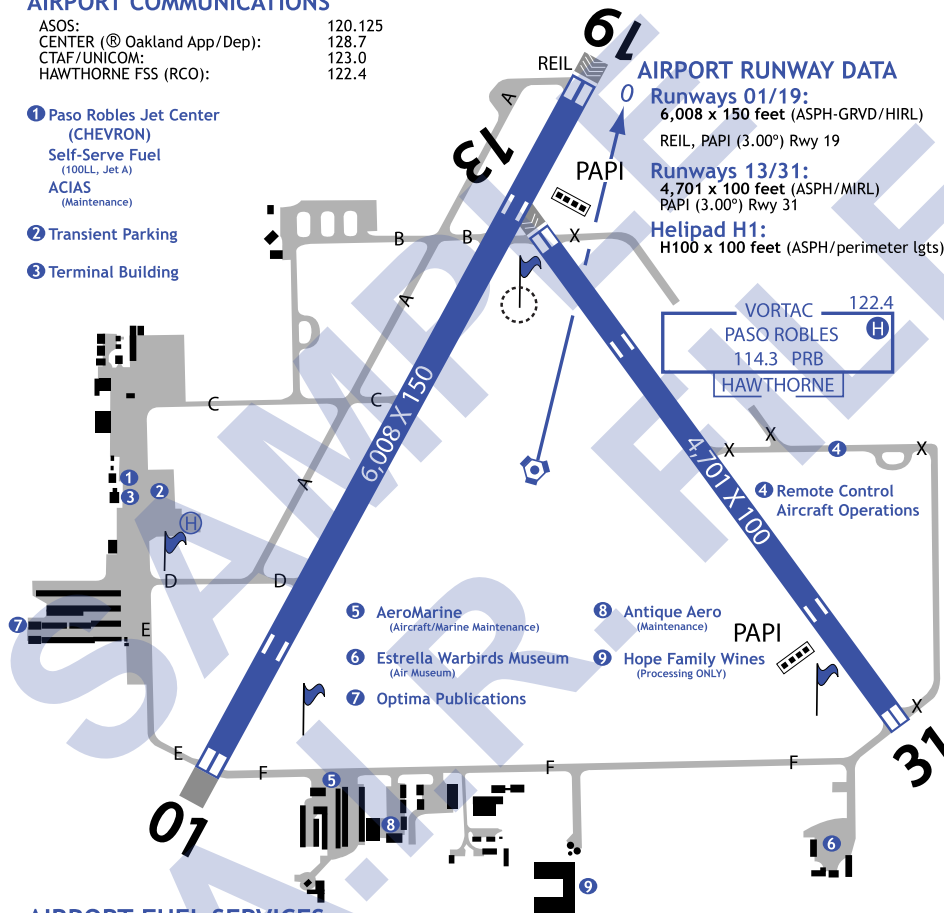
- 1 Paso Robles Jet Center (CHEVRON) Self-Serve Fuel (100LL, Jet A) ACIAS (Maintenance)
- 2 Transient Parking
- 3 Terminal Building

## AIRPORT RUNWAY DATA

**Runways 01/19:**  
6,008 x 150 feet (ASPH-GRVD/HIRL)  
REIL, PAPI (3.00°) Rwy 19

**Runways 13/31:**  
4,701 x 100 feet (ASPH/MIRL)  
PAPI (3.00°) Rwy 31

**Helipad H1:**  
H100 x 100 feet (ASPH/perimeter lgts)



VORTAC 122.4  
PASO ROBLES 114.3 PRB  
HAWTHORNE

4 Remote Control Aircraft Operations

5 AeroMarine (Aircraft/Marine Maintenance)

6 Estrella Warbirds Museum (Air Museum)

7 Optima Publications

8 Antique Aero (Maintenance)

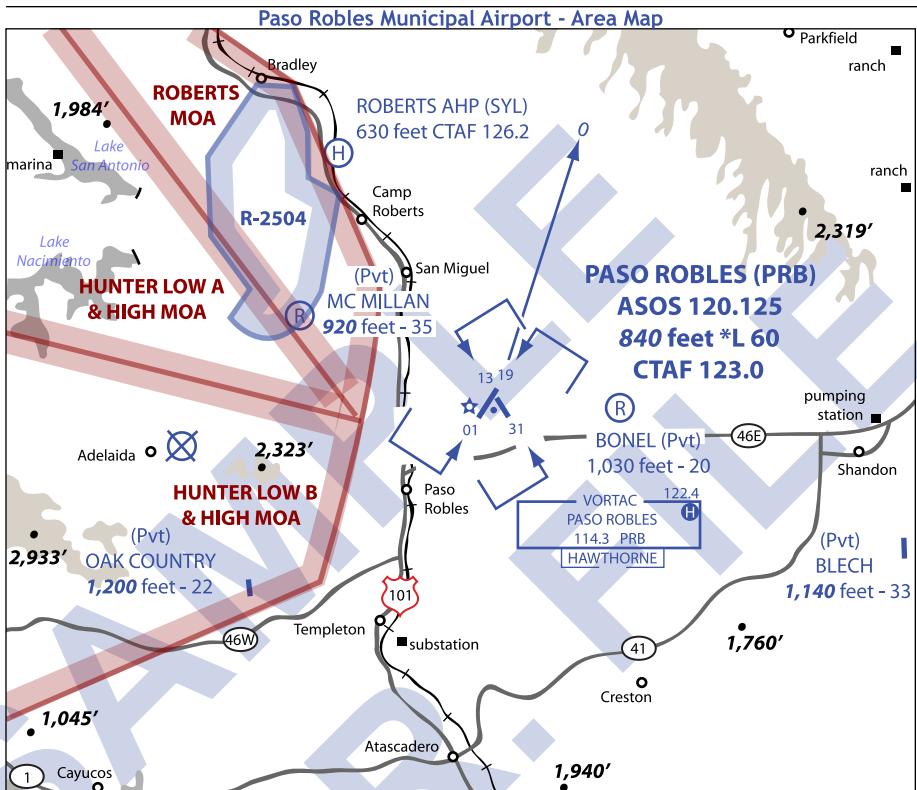
9 Hope Family Wines (Processing ONLY)

## AIRPORT FUEL SERVICES

**Paso Robles Jet Center** (UNICOM 123.0) CHEVRON (100LL, Jet A - both available 24 hrs from self-serve pumps) full service FBO. Hertz car rental. Open 7am to 7pm daily and after hours on request **Contacts:** phone (805) 239-5860; website [www.pasojet.com](http://www.pasojet.com); email [info@pasojet.com](mailto:info@pasojet.com).

## WEEKEND FUN/FOOD/LODGING/TRANSPORTATION

**WEEKEND FUN:** **Hunter Ranch Golf Course** (805-237-7444/[www.hunterranchgolf.com](http://www.hunterranchgolf.com)) play 18 holes overlooking some of the most beautiful landscape California has to offer. Enjoy group Barbeques, a complete Golf shop, practice greens and more. Reservations are recommended (1.8 miles). **Eberle Winery** (805-238-9607/[www.eberlewinery.com](http://www.eberlewinery.com)) visit this award winning winery and attend one of their daily cave tours, reserve a picnic lunch or just taste and enjoy the beautiful views (2.5 miles). **FOOD Sylvester Winery** (805-227-4000) 5115 Buena Vista Dr, Paso Robles (by arrangement only). **Cowgirl Café** (805-238-6403) 1316 Pine St, Paso Robles (4.2 miles). **Artisan** (805-237-084) 1401 Park St, Paso Robles (4.3 miles). **LODGING La Quinta Inn & Suites** (805-239-3004) 2615 Buena Vista Dr, Paso Robles (1.6 miles). **Villa Toscana** (805-238-5600) 4230 Buena Vista Dr, Paso Robles (1.9 miles). **Adelaide Inn** (805-238-2770) 1215 Ysabel Ave, Paso Robles (3.5 miles). **TRANSPORTATION Paso Robles Dial-A-Ride** (805-239-8747). **Budget** (805-266-9470). **Enterprise** (805-239-0628).



**AIRPORT COMMUNICATIONS**

ASOS:	120.125
CENTER (® Oakland App/Dep):	128.7
CTAF/UNICOM:	123.0
HAWTHORNE FSS (RCO):	122.4

**ENROUTE WX RESOURCES (w/IAP's)**

SBP (26 nmi S):	ASOS (805-547-1260); ATIS 120.6
SMX (47 nmi S):	ASOS (805-928-0384); ATIS 121.15
VGB (57 nmi S):	ASOS (805-605-8926); ATIS 133.125

**AIRPORT INSTRUMENT PROCEDURES**

VOR or GPS-A: VORTAC (PRB) 114.3. Inbound approach course 313°.  
 VOR/DME or GPS RWY 19: VORTAC (PRB) 114.3. Inbound approach course 172° (TDZE 813').  
 VOR/DME or GPS-B: VORTAC (PRB) 114.3. Inbound approach course 313°.

**NAVIGATIONAL AIDS (NOTAM FILE PRB)**

(L) VORTACW: 114.3 (PRB) Chan 90 N35° 40.35' W120° 37.63' at fld. 820/16E. HIWAS.

**NOISE ABATEMENT PROCEDURES**

No noise abatement procedures published for the Paso Robles Airport.

**PILOT'S TRIP LOG: Paso Robles Municipal Airport** Date \_\_\_\_\_  
 4912 Wing Way  
 Paso Robles, CA 93446, USA

Aircraft \_\_\_\_\_ Crew \_\_\_\_\_  
 Type \_\_\_\_\_  
 Ident \_\_\_\_\_

Flight #	From	To	DEP Time	ARR Time	TTL Time	App	Wx	Ldgs	Night

Airport Information Reference (A.I.R.) File (rev 11-09-09) changes: Lat/Lon. Airport elevation. Rwy 01/19 length. Rwy 13/31 length. TDZE Rwy 19. Pattern alt. Overview map. Area map.

**PILOT'S TRIP NOTES:**

\*\*\*SPECIAL ALTERNATE MINIMUMS APPLY\*\*\* \*\*\*SPECIAL TAKE-OFF MINIMUMS APPLY\*\*\*

**Area Arrivals (STAR's):** None available  
**Area Departures (SID's):** None available

**From Other Airports:**  
 26 nmi N of San Luis County Regional Airport (SBP)  
 35 nmi SE of Hunter Liggett / Tusi Army Heliport (HGT)  
 47 nmi N of Santa Maria Public Airport (SMX)

**From VORs:**  
 PRB (114.3) co-located on field  
 MQO (112.4) 358r/26 nmi  
 ROM (110.0) 160r/28 nmi  
 AVE (117.1) 257r/32 nmi

**Phone Contacts:**  
 ASOS: (805) 239-3593  
 Airport Management: (805) 237-3877  
 AFSS (Hawthorne): (310) 970-0102 or (866) 879-8252

**Website:**  
 www.pasoairport.com

**TRIP EXPENSE NOTES:**

(eg. breakfast, lunch, dinner, snack, hotel, tips, phone, taxi, misc ect.)